

## Canada Water Dockside - Site A and Dock Edge Works

*Indicative Hoardings and Pedestrian Routes*

**11<sup>th</sup> September 2023**

 @gt\_llp

 gardiner.com

 marketintel.gardiner.com



The plan overleaf identifies how the Canada Water Dockside Project will ensure safe and secure accessible routes for pedestrians from Canada Water Station to the Surrey Quays Retail Park throughout the development works – with an emphasis on looking to maintain a direct route along the eastern edge when possible.

We anticipate there being a period of overlap between the works at Canada Water Dockside (Plot A and Eastern Dock Edge) and the adjacent Canada Water Masterplan (Plot A and the Western/Southern Dock Edges) being undertaken by British Land. We will work closely with British Land and their contractors throughout the works to ensure effective coordination, but at this stage we anticipate the works to the western and southern edges being completed or largely completed before the main set of works are undertaken at Canada Water Dockside. That will create a new safe, secure and accessible route to the west of the dock.

During our works to the eastern Dock Edge, we do anticipate the need to close the route along the Dock Edge for limited periods of time so that we can undertake works safely without any danger to pedestrians. During these limited periods we anticipate there being alternative routes along Surrey Quays Road to the east and along the western Dock Edge, so that pedestrians have safe and secure routes through the area. Closures will be kept to a minimum and undertaken in order to safeguard members of the public.

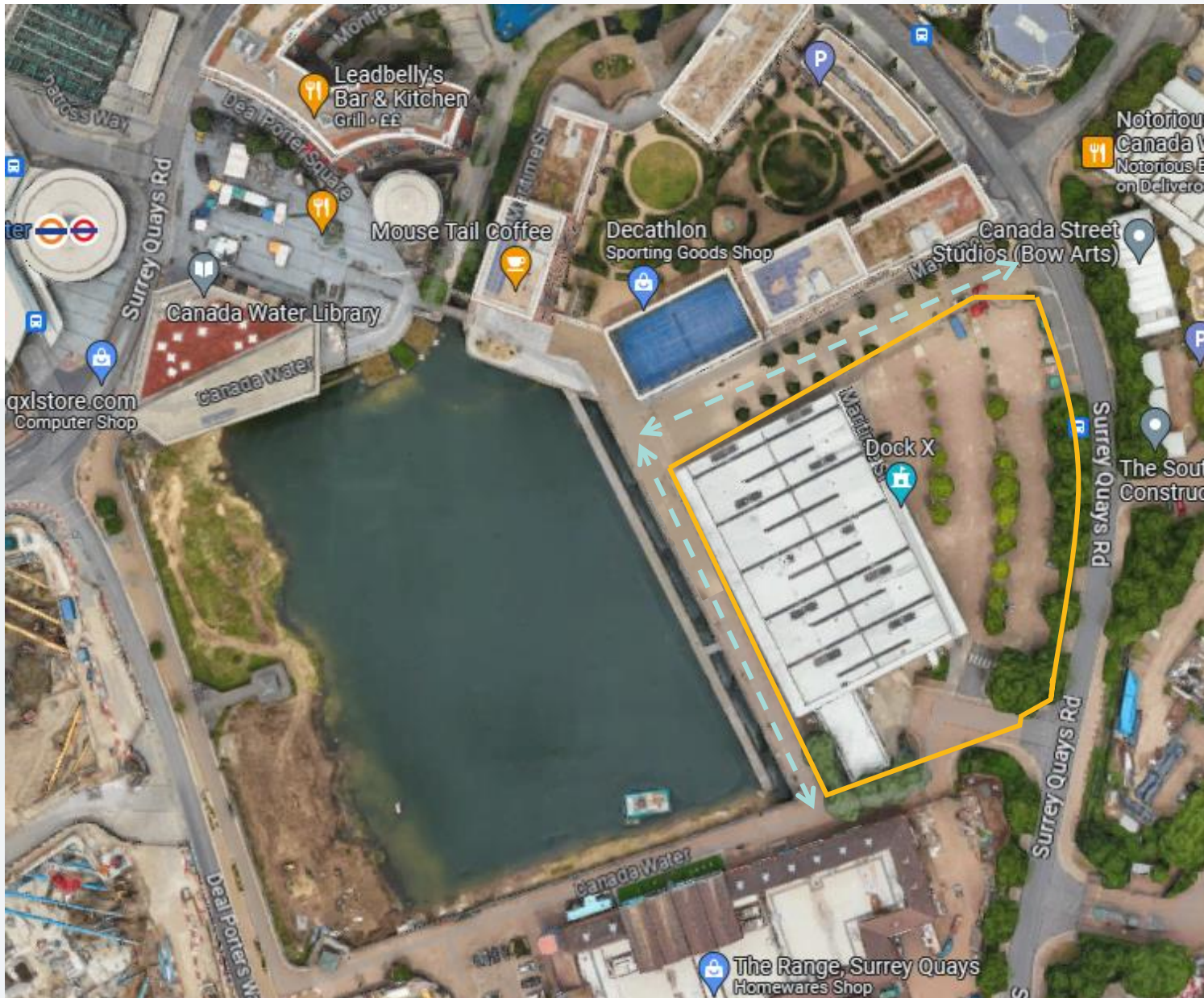
The plan illustrates the indicative hoarding locations proposed for the Site A works, as well as the indicative pedestrian routes that will be managed as part of the Canada Water Dockside project.

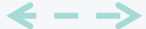
Because the eastern Dock Edge is adopted highway, approval will be required from the Council for any closures. Full details will be provided with the Construction Environmental Management Plan to discharge the associated planning conditions, including for example;

1. Height of hoarding
2. Lighting
3. Signage
4. Vision panels
5. Construction logistics
6. Supervisor contact details
7. Vehicle barriers

We will continue to work closely with the Council and British Land (and their contractors) throughout the works, and will communicate any temporary closures or changes to routes to the local community through our contractors's ongoing communications (anticipated to include regular newsletters and a phone line).





KEY	
	Indicative Hoarding
	Pedestrian Routes